

**TF532: TERRAFIRMA CREEPER JOINT REAR RADIUS ARMS****DEFENDER 90 / 110 / 130, DISCOVERY 1 & RANGE ROVER CLASSIC****FITTING INSTRUCTIONS**

1. Put the car into gear or park and apply the hand brake.
2. Measure the distance from axle to chassis mount on both sides of the vehicle.
3. Loosen the rear wheel nuts on one side, raise the vehicle on a trolley or bottle jack under the axle and then support the vehicle with an axle stand under the chassis. It's easier and safer to do this job one side at a time.
4. Remove one rear wheel.
5. Lower the car so the axle stand takes most of the cars weight but leave the jack under the axle to support the axle's weight.
6. Clean all mounting nuts and bolts and treat with a penetrating fluid if necessary.
7. It is usually easier to remove the 3 smaller nuts and bolts that hold the front triangular bush to the chassis mounting that the arm in-turn bolts through.
8. Undo and remove the nut and bolt retaining the radius arm to the axle, it is recommended that if either the nut or bolt are worn, they should be replaced (bolt - BH610321L & nut - NY610041L).
9. Carefully drop the radius arm down and out of the axle bracket and then remove the arm complete with the front triangular bush back through the chassis bracket.
10. Install your preferred bush in to the axle end of both radius arms.
11. Clean the flat of the chassis mounting surface and then bolt the new mounting for the Johnny jointed end up to the chassis using the 3 nuts and bolts and torque to the correct setting. Make sure you get this the correct way around.



WARRANTY & DISCLAIMER - Terrafirma products are warranted free from defects in materials and workmanship for a period of 12 months from the date of retail invoice. Terrafirma does not warrant that the products manufactured or marketed by it comply with the laws of the country where those goods are purchased or used. It is the sole responsibility of the purchaser to ascertain whether products being purchased, or the fitting of those products to any other object, comply with local laws. This warranty covers structural defect and workmanship but does not cover finishes, labour charges for removal or refitting, freight costs, accident damage, misuse or abuse, damage due to incorrect or improper fitment or application, modified product, faulty design or consequential damage of any kind. Damage or defects caused by collision, alteration, improper installation, road hazards, adverse conditions or usage for any other purpose other than normal private usage are not covered by this warranty. Terrafirma shall not be liable for any other claim relating to the use of the product and any indirect special or consequential damage or injury to any person, company or other entity. All claims must be accompanied by the original retail invoice and should be submitted to the supplying Allmakes 4x4/Terrafirma distributor. This warranty covers only the replacement of the product or part concerned. The decision remains solely at the discretion of Allmakes Ltd. The information contained in this catalogue was correct at the time of going to press. Allmakes/Terrafirma and its associated companies reserve the right to alter the range and any product specifications without notice. Always consult your Allmakes/Terrafirma distributor for the latest product information and specifications. The Terrafirma range of products is constantly being evaluated for enhancement and improvement to make sure the level of quality and performance is as expected.



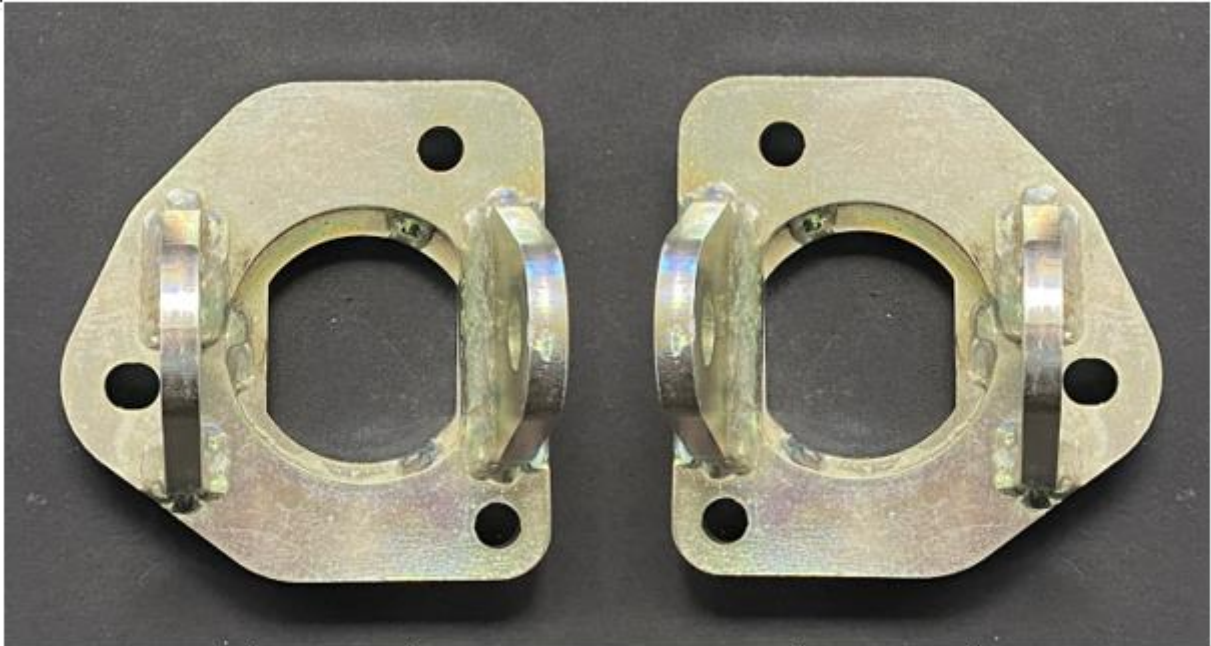
12. Ensure the rear axle is centralised in the rear wheel arch
13. Screw a threaded johnny joint in to the end of each radius arm before adjusting the lengths to ensure they both match the measurement taken prior to removing the original radius arms. Note that there's a grease nipple in the johnny joint, orientating it downwards when fitted to the vehicle provides better access should you wish to grease the joint
14. Once correct, gently tighten the locknut.
15. Attach the bushed end of the arm to the axle using the nut & bolt, then lift front end of the arm up, inserting the johnny joint in to the chassis mounted bracket, securing in place with the fasteners provided.
16. Once fitted, tighten all fasteners etc to the correct torque setting, remembering to tighten the johnny joint locknut if you've not already done so.
17. Refit the wheel, lower the car off of the axle stand and torque the wheel nuts correctly.
18. Repeat the procedure on the other side of the car.



WARRANTY & DISCLAIMER - Terrafirma products are warranted free from defects in materials and workmanship for a period of 12 months from the date of retail invoice. Terrafirma does not warrant that the products manufactured or marketed by it comply with the laws of the country where those goods are purchased or used. It is the sole responsibility of the purchaser to ascertain whether products being purchased, or the fitting of those products to any other object, comply with local laws. This warranty covers structural defect and workmanship but does not cover finishes, labour charges for removal or refitting, freight costs, accident damage, misuse or abuse, damage due to incorrect or improper fitment or application, modified product, faulty design or consequential damage of any kind. Damage or defects caused by collision, alteration, improper installation, road hazards, adverse conditions or usage for any other purpose other than normal private usage are not covered by this warranty. Terrafirma shall not be liable for any other claim relating to the use of the product and any indirect special or consequential damage or injury to any person, company or other entity. All claims must be accompanied by the original retail invoice and should be submitted to the supplying Allmakes 4x4/Terrafirma distributor. This warranty covers only the replacement of the product or part concerned. The decision remains solely at the discretion of Allmakes Ltd. The information contained in this catalogue was correct at the time of going to press. Allmakes/Terrafirma and its associated companies reserve the right to alter the range and any product specifications without notice. Always consult your Allmakes/Terrafirma distributor for the latest product information and specifications. The Terrafirma range of products is constantly being evaluated for enhancement and improvement to make sure the level of quality and performance is as expected.



TF532 Chassis Bracket Identification Guide



LEFT

Right

WARRANTY & DISCLAIMER - Terrafirma products are warranted free from defects in materials and workmanship for a period of 12 months from the date of retail invoice. Terrafirma does not warrant that the products manufactured or marketed by it comply with the laws of the country where those goods are purchased or used. It is the sole responsibility of the purchaser to ascertain whether products being purchased, or the fitting of those products to any other object, comply with local laws. This warranty covers structural defect and workmanship but does not cover finishes, labour charges for removal or refitting, freight costs, accident damage, misuse or abuse, damage due to incorrect or improper fitment or application, modified product, faulty design or consequential damage of any kind. Damage or defects caused by collision, alteration, improper installation, road hazards, adverse conditions or usage for any other purpose other than normal private usage are not covered by this warranty. Terrafirma shall not be liable for any other claim relating to the use of the product and any indirect special or consequential damage or injury to any person, company or other entity. All claims must be accompanied by the original retail invoice and should be submitted to the supplying Allmakes 4x4/Terrafirma distributor. This warranty covers only the replacement of the product or part concerned. The decision remains solely at the discretion of Allmakes Ltd. The information contained in this catalogue was correct at the time of going to press. Allmakes/Terrafirma and its associated companies reserve the right to alter the range and any product specifications without notice. Always consult your Allmakes/Terrafirma distributor for the latest product information and specifications. The Terrafirma range of products is constantly being evaluated for enhancement and improvement to make sure the level of quality and performance is as expected.