



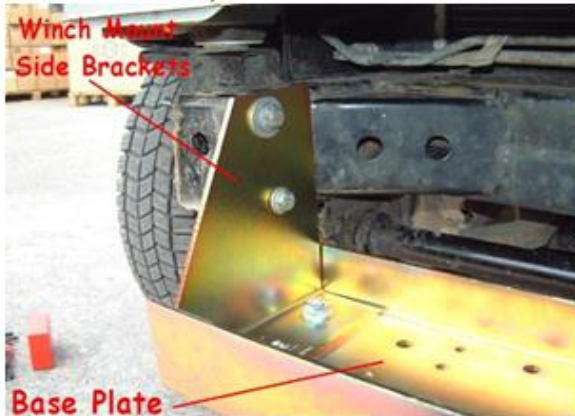
TF078: TERRAFIRMA DISCRETE WINCH MOUNT

DISCOVERY 2

FITTING INSTRUCTIONS

1 To fit the Winch Mount, the front bumper should be removed. Some of the vehicle under-trays may need to be removed to gain access to the bolts.

2 Now, fit the Winch Mount assembly to the vehicle and put the winch in place.



Photograph shows vehicle without winch in place and with bumper removed.

3 Remove the wire mesh grill from the spoiler to allow access to the winch. It may also be necessary to cut the bumper/spoiler so offer up the bumper to the vehicle and cut until the winch/winch mount is clear and the bumper fits satisfactory.

4 Now remove the bumper, winch/winch mount assembly and take off the Winch Mount Side Brackets.

5 Replace the bumper with the Winch Mount Side Brackets in position.

6 Make sure your winch is securely attached to the base plate of the Winch Mount, and lift to attach to the Winch Mount Side Brackets with the nuts and bolts provided. Some help may be necessary at this point.

7 Finally tighten all nuts and bolts and check the bumper and winch mount is secure before driving.



WARRANTY & DISCLAIMER - Terrafirma products are warranted free from defects in materials and workmanship for a period of 12 months from the date of retail invoice. Terrafirma does not warrant that the products manufactured or marketed by it comply with the laws of the country where those goods are purchased or used. It is the sole responsibility of the purchaser to ascertain whether products being purchased, or the fitting of those products to any other object, comply with local laws. This warranty covers structural defect and workmanship but does not cover finishes, labour charges for removal or refitting, freight costs, accident damage, misuse or abuse, damage due to incorrect or improper fitment or application, modified product, faulty design or consequential damage of any kind. Damage or defects caused by collision, alteration, improper installation, road hazards, adverse conditions or usage for any other purpose other than normal private usage are not covered by this warranty. Terrafirma shall not be liable for any other claim relating to the use of the product and any indirect special or consequential damage or injury to any person, company or other entity. All claims must be accompanied by the original retail invoice and should be submitted to the supplying Allmakes 4x4/Terrafirma distributor. This warranty covers only the replacement of the product or part concerned. The decision remains solely at the discretion of Allmakes Ltd. The information contained in this catalogue was correct at the time of going to press. Allmakes/Terrafirma and its associated companies reserve the right to alter the range and any product specifications without notice. Always consult your Allmakes/Terrafirma distributor for the latest product information and specifications. The Terrafirma range of products is constantly being evaluated for enhancement and improvement to make sure the level of quality and performance is as expected.

TF078