

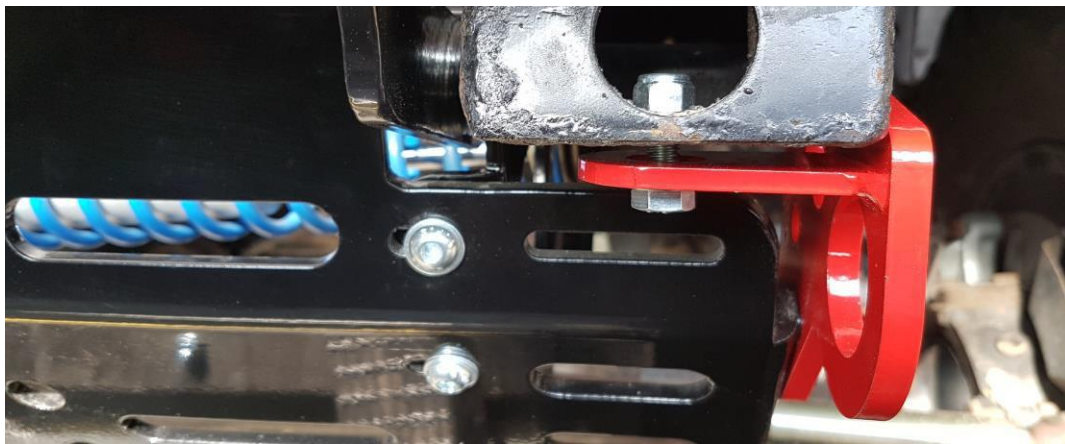
**TF0017: TERRAFIRMA SKELETON STEERING GUARD****DEFENDER 90 / 110 / 130 – LEFT & RIGHT HAND DRIVE****FITTING INSTRUCTIONS**

Disconnect the steering damper from the chassis end mount.

Remove the lashing eyes and steering box support bracket bolt that runs through the chassis.

Offer up the two side plates of the steering guard up to the inside of the chassis rails with the lower edge folded inward.

Offer up the red recovery point and using M8 nuts bolts and washers loosely attach the recovery point through the underside of the jacking point.



Loosely bolt the side plates to the inside of the chassis rails using the bolts for the lashing eyes through the recovery points. Refit the steering box support bracket bolt and the long M10 bolt from the fitting kit that secures the side plate opposite the steering box in the spare hole in the chassis rail.



WARRANTY & DISCLAIMER - TerrafirMa products are warranted free from defects in materials and workmanship for a period of 12 months from the date of retail invoice. TerrafirMa does not warrant that the products manufactured or marketed by it comply with the laws of the country where those goods are purchased or used. It is the sole responsibility of the purchaser to ascertain whether products being purchased, or the fitting of those products to any other object, comply with local laws. This warranty covers structural defect and workmanship but does not cover finishes, labour charges for removal or refitting, freight costs, accident damage, misuse or abuse, damage due to incorrect or improper fitment or application, modified product, faulty design or consequential damage of any kind. Damage or defects caused by collision, alteration, improper installation, road hazards, adverse conditions or usage for any other purpose other than normal private usage are not covered by this warranty. TerrafirMa shall not be liable for any other claim relating to the use of the product and any indirect special or consequential damage or injury to any person, company or other entity. All claims must be accompanied by the original retail invoice and should be submitted to the supplying Allmakes 4x4/TerrafirMa distributor. This warranty covers only the replacement of the product or part concerned. The decision remains solely at the discretion of Allmakes Ltd. The information contained in this catalogue was correct at the time of going to press. Allmakes/TerrafirMa and its associated companies reserve the right to alter the range and any product specifications without notice. Always consult your Allmakes/TerrafirMa distributor for the latest product information and specifications. The TerrafirMa range of products is constantly being evaluated for enhancement and improvement to make sure the level of quality and performance is as expected.

**TF0017
90/110/130**



Pass the steering damper through the hole and re-bolt to the chassis.



Offer up the guard to the two side plates and recovery points and loosely bolt together using the M8 button head Allen bolts, nuts and washers.

Ensure that the guard is square and level; when you are happy fully tighten all bolts.

NB the side plates are designed to fit between most winch bumper chassis brackets and the chassis, spacers or washers may be required to enable the lashing eye bolts to be tightened properly without distortion of the steering guard or winch bumper.

WARRANTY & DISCLAIMER - Terrafirma products are warranted free from defects in materials and workmanship for a period of 12 months from the date of retail invoice. Terrafirma does not warrant that the products manufactured or marketed by it comply with the laws of the country where those goods are purchased or used. It is the sole responsibility of the purchaser to ascertain whether products being purchased, or the fitting of those products to any other object, comply with local laws. This warranty covers structural defect and workmanship but does not cover finishes, labour charges for removal or refitting, freight costs, accident damage, misuse or abuse, damage due to incorrect or improper fitment or application, modified product, faulty design or consequential damage of any kind. Damage or defects caused by collision, alteration, improper installation, road hazards, adverse conditions or usage for any other purpose other than normal private usage are not covered by this warranty. Terrafirma shall not be liable for any other claim relating to the use of the product and any indirect special or consequential damage or injury to any person, company or other entity. All claims must be accompanied by the original retail invoice and should be submitted to the supplying Allmakes 4x4/Terrafirma distributor. This warranty covers only the replacement of the product or part concerned. The decision remains solely at the discretion of Allmakes Ltd. The information contained in this catalogue was correct at the time of going to press. Allmakes/Terrafirma and its associated companies reserve the right to alter the range and any product specifications without notice. Always consult your Allmakes/Terrafirma distributor for the latest product information and specifications. The Terrafirma range of products is constantly being evaluated for enhancement and improvement to make sure the level of quality and performance is as expected.

TF0017
90/110/130