



G1399 (BP401) Hinge Guard (4 Door)

Kit Includes:

- 2x Notched Hinge Guard Plates
- 6x Plain Hinge Guard Plates
- 8x Hinge Guard Stickers (2 with notch)
- 4x 'Hinge Guard Fitted' Window Stickers

Fits:

All Defender Models and Years with
2nd-Row Doors
110/127/130

Tools Required:

- Trim removal tools
- Large Pozi Screwdriver or T40 Torx drive (depending on vehicle year)
- 13mm spanner or socket.

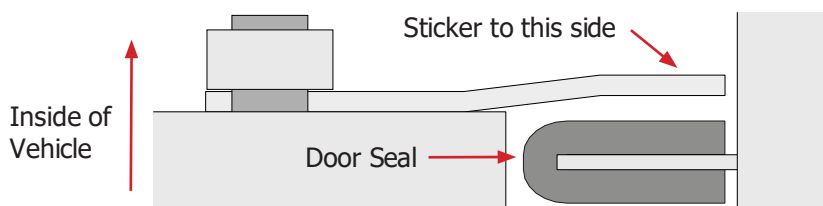
Nb. Door seals must be in good condition. Any splaying from internal corrosion may interfere with the hinge guard plates.

Instructions:

This is a very simple job to do with basic tools.

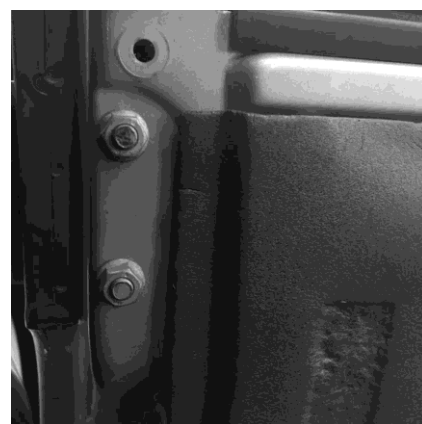
Before you start: In your pack you have 'Warning: Finger Trap' stickers, these are to stick on the corresponding plates (notched stickers for the top).

It's far easier to fit the stickers to the plates before fitting to the vehicle. The plates have an angled profile, the raised side is the side to apply the sticker to and remains visible after installation.



1. Carefully pry the lock button trim upwards, remove screws in the door grab handle and interior door release lever, releasing any trim.

Gently pry the main door card away from the door (Don't use anything that may damage paint or trim panels), there are around 11 pin fixings around the outside of the card. This will reveal the nut end of the four hinge bolts.



WARRANTY & DISCLAIMER - TerrafirMa products are warranted free from defects in materials and workmanship for a period of 12 months from the date of retail invoice. TerrafirMa does not warrant that the products manufactured or marketed by it comply with the laws of the country where those goods are purchased or used. It is the sole responsibility of the purchaser to ascertain whether products being purchased, or the fitting of those products to any other object, comply with local laws. This warranty covers structural defect and workmanship but does not cover finishes, labour charges for removal or refitting, freight costs, accident damage, misuse or abuse, damage due to incorrect or improper fitment or application, modified product, faulty design or consequential damage of any kind. Damage or defects caused by collision, alteration, improper installation, road hazards, adverse conditions or usage for any other purpose other than normal private usage are not covered by this warranty. TerrafirMa shall not be liable for any other claim relating to the use of the product and any indirect special or consequential damage or injury to any person, company or other entity. All claims must be accompanied by the original retail invoice and should be submitted to the supplying Allmakes 4x4/TerrafirMa distributor. This warranty covers only the replacement of the product or part concerned. The decision remains solely at the discretion of Allmakes Ltd. The information contained in this catalogue was correct at the time of going to press. Allmakes/TerrafirMa and its associated companies reserve the right to alter the range and any product specifications without notice. Always consult your Allmakes/TerrafirMa distributor for the latest product information and specifications. The TerrafirMa range of products is constantly being evaluated for enhancement and improvement to make sure the level of quality and performance is as expected.

BP401 Hinge Guard (4 Door)

2. Work on one hinge at a time, as this reduces the chance of door alignment issues later. Remove the nuts from the top door bolts, but do not remove the bolts from the door. You may need to hold the bolt head to prevent them from spinning.

3. Place the top plate (Cut out on front face for front door top only, the non-cut out fits all other hinge points) over the protruding bolts with the curve on the plate curving towards the inside of the vehicle.



4. Replace the nuts onto the bolts and nip them until just tight against the plate (Picture shows notched plate for top hinge on front door).

Slowly close the door watching where the plate contacts. Providing you have fitted the plate the correct way it should miss the door seal when closing. Also if you have gently nipped the nuts, the plate should be able to align itself where it contacts the edge of the dashboard or B-pillar.



5. Open the door, and providing there is enough adjustment left on the slot, re adjust the plate to allow approx. 1-2mm clearance between the plate and dashboard or B-pillar (With Land Rover tolerances, your vehicles spacing may be bigger or smaller). Tighten nuts fully.

5a. Repeat steps 2-5 for the lower hinge plate. Making sure it clears the door seal. If the seal is splayed, it must be replaced.

6. Repeat steps 2-5a for second row doors, working on one hinge at a time as before.



WARRANTY & DISCLAIMER - Terrafirma products are warranted free from defects in materials and workmanship for a period of 12 months from the date of retail invoice. Terrafirma does not warrant that the products manufactured or marketed by it comply with the laws of the country where those goods are purchased or used. It is the sole responsibility of the purchaser to ascertain whether products being purchased, or the fitting of those products to any other object, comply with local laws. This warranty covers structural defect and workmanship but does not cover finishes, labour charges for removal or refitting, freight costs, accident damage, misuse or abuse, damage due to incorrect or improper fitment or application, modified product, faulty design or consequential damage of any kind. Damage or defects caused by collision, alteration, improper installation, road hazards, adverse conditions or usage for any other purpose other than normal private usage are not covered by this warranty. Terrafirma shall not be liable for any other claim relating to the use of the product and any indirect special or consequential damage or injury to any person, company or other entity. All claims must be accompanied by the original retail invoice and should be submitted to the supplying Allmakes 4x4/Terrafirma distributor. This warranty covers only the replacement of the product or part concerned. The decision remains solely at the discretion of Allmakes Ltd. The information contained in this catalogue was correct at the time of going to press. Allmakes/Terrafirma and its associated companies reserve the right to alter the range and any product specifications without notice. Always consult your Allmakes/Terrafirma distributor for the latest product information and specifications. The Terrafirma range of products is constantly being evaluated for enhancement and improvement to make sure the level of quality and performance is as expected.

BP401 Hinge Guard (4 Door)

7. Refit door trim, take care to align the card pins properly to ensure positive location. Also, when refitting the trim around the door lock button ensure you align it properly as the plastic tags can snap easily.

After fitting, they should sit snugly with the warning sticker clearly visible.



8. Finally, fit the warning stickers to each window to alert the prospective thief that their job will be much more difficult.



Whilst a determined thief will eventually prevail, the Hinge Guard is designed to make the theft of your doors significantly more difficult without them being damaged in the process.

The objective is to make your vehicle less attractive to a thief, so they will look elsewhere.

WARRANTY & DISCLAIMER - Terrafirma products are warranted free from defects in materials and workmanship for a period of 12 months from the date of retail invoice. Terrafirma does not warrant that the products manufactured or marketed by it comply with the laws of the country where those goods are purchased or used. It is the sole responsibility of the purchaser to ascertain whether products being purchased, or the fitting of those products to any other object, comply with local laws. This warranty covers structural defect and workmanship but does not cover finishes, labour charges for removal or refitting, freight costs, accident damage, misuse or abuse, damage due to incorrect or improper fitment or application, modified product, faulty design or consequential damage of any kind. Damage or defects caused by collision, alteration, improper installation, road hazards, adverse conditions or usage for any other purpose other than normal private usage are not covered by this warranty. Terrafirma shall not be liable for any other claim relating to the use of the product and any indirect special or consequential damage or injury to any person, company or other entity. All claims must be accompanied by the original retail invoice and should be submitted to the supplying Allmakes 4x4/Terrafirma distributor. This warranty covers only the replacement of the product or part concerned. The decision remains solely at the discretion of Allmakes Ltd. The information contained in this catalogue was correct at the time of going to press. Allmakes/Terrafirma and its associated companies reserve the right to alter the range and any product specifications without notice. Always consult your Allmakes/Terrafirma distributor for the latest product information and specifications. The Terrafirma range of products is constantly being evaluated for enhancement and improvement to make sure the level of quality and performance is as expected.